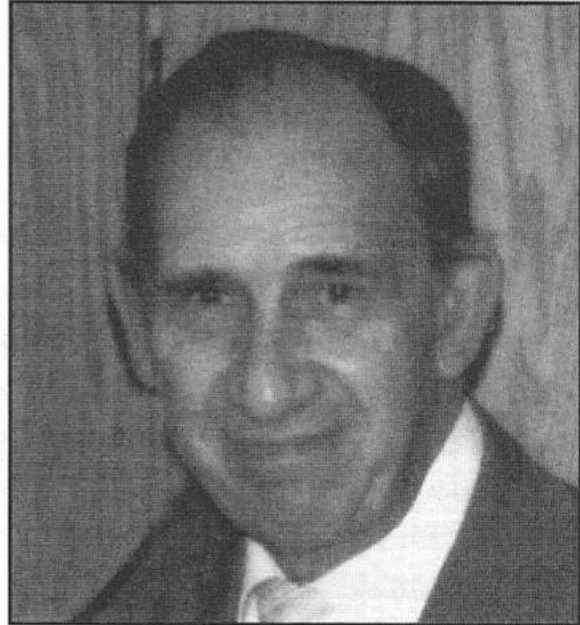


Charles A. Ellis

Ellis was well known in Sioux Falls for his remarkable craftsmanship. In 1942, he began his 34-year career at the South Dakota School for the Deaf (SDSD) as a woodworking teacher. Many students benefitted from his tutelage, and their skills were carried over to their chosen careers and utilized in improving their own homes at great savings.



Ellis was well-liked by the students, and his teaching, patience and caring attitude were contagious. He was extremely talented in cabinetmaking, drafting and woodworking projects. Also, he was especially noted for making wonderful Christmas decorations at the school and the students adored them.

“The Transcendent Territory,” CSD’s historical book on the South Dakota deaf community, states that, in 1963, students taking shop class under Ellis were a part of the construction crew building a new, larger greenhouse which housed various flowers that were in bloom year-long.

Ellis found his talent in woodcarving when he received a knife at the age of five. After his retirement from SDSD in 1977, he continued honing his skills as a woodcarver.

An accident several years ago in his workshop ended his extraordinary craftsmanship career. Now, he is unable to handle the tools he used to carve products with. He once made a three-dimensional model of an old train from just a picture in an old magazine — an awesome accomplishment.

Ellis is now 89, residing at the Prince of Peace nursing home in Sioux Falls.